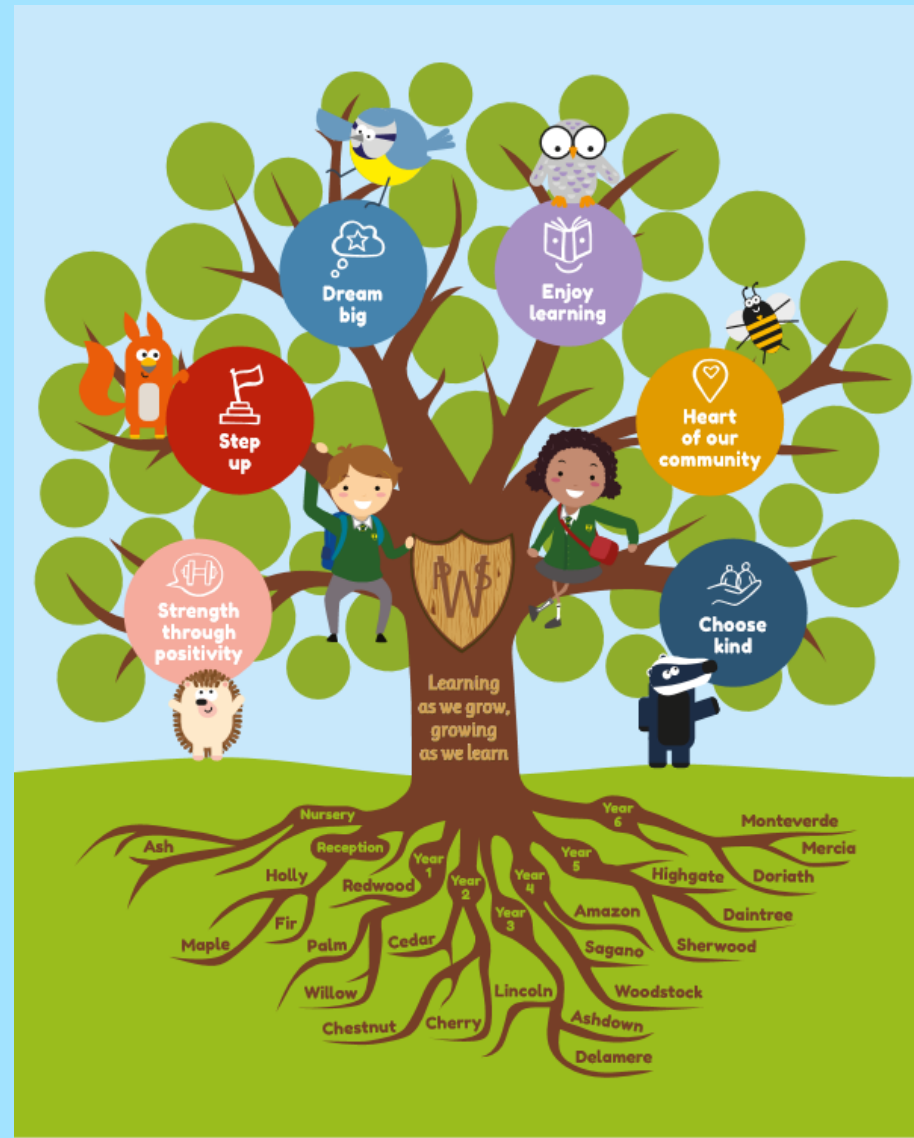


Thursday 7th October

Pinner Wood's Vision for 2021-22

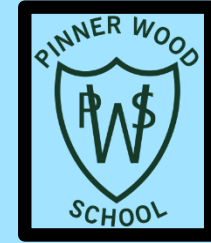


Our Pinner Wood Values



Pinner Wood School

Why choose us?



Our Ethos

‘Learning as we grow, growing as we learn’

Our ethos:

- Be safe and happy.
- Have respect for and show kindness to one another.
- Learn and achieve to the very best of our ability.

We pride ourselves in being a ‘family friendly’ open school, where all children progress and achieve well.



What are our Plans?

Do you know what we have been working on?



No Child Misses Out (at PW)

Priority 1: Supporting pupils and staff - mental health, emotional health and wellbeing (to include transition) (Heart skills)

Priority 2: To promote reading and oracy (Head)

Priority 3: Addressing gaps – socially, emotional, academically.



The Quality of Education

Foundation Curriculum—Arts Focus

To look deeply at Art. Usic and DT to ensure the teaching is high quality and children are having change to gain new knowledge in these areas.

(MUSIC<-ART-T PLAN)

Writing

To raise standards in writing by ensuring every learner has a secure grasp of ggrammar, punctuation and .can use this consistently.

To link class readers to writing to engage writers.

IT

Embed IT teaching into every classroom so that it becomes and integral part of our curriculum.

Make use of the new i-pads in each class (1 between 2 year 1 up)

Oracy– Stage 2

Embed Oracy across the school.

Ensuer it is being used in every class as part of the curriculum to develop every child's Oracy skills.

(ORACY PLAN)

Maths

To embed CPA (concrete, pictorial, abstract) methods in maths so that learners understand the concepts.

(Maths Plan)

Reading

To continue to ensure that every pupil at PW develops a love for reading and has success in this area.

(ENGLISH PLAN)

Behaviour and Attitudes

PW Value

Continue to embed to PW values to ensure that they are part of our reward system,

To ensure they run through school policies and procedures.

A focus on independence in learning, supported by resources and quality first teaching and planning.

Targeted, timely evidenced-based interventions to support this

Outcomes

- 'No child misses out' gaps identified (in all aspects) and strategies to support
- All pupils making good progress across the school from starting points.
- Children and staff are supported and learning and teaching is outstanding across the school.

Personal Development

Well being and Emotional Health

A programme of well being and emotional health to give pupils the emotional literacy to discuss and express how they are feeling.

To achieve Healthy Schools Gold Mark

Diversity

To reflect on our current practice, teaching and resources to ensure that they are reflective of our diverse community.

Project Based Learning

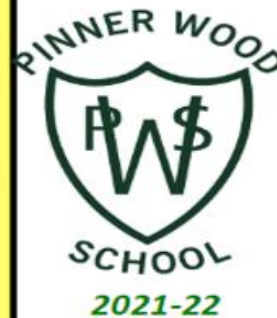
Continue to develop project based learning at Pinner Wood so that Projects reflect the knowledge learnt in the topic.

(History/ Geography Plan)

Sustainably

To embed Global Goals in our curriculum so that children think about themselves as future global citizens and the impact of their actions.

(Geography Plan)



Leadership and Management

New Teachers

Induct new teachers and ensure they are supported and know the PW ways of working. To run the ECT programme.

Site Priorities

To develop our site to ensure best possible learning for the pupils e.g. Media suite, development of year 5/6 playground.

Commitment to Well Being– pupils and staff

Work to bring funds into school.

'Building back'

To make use of catch up funding to ensure all children across the school and making good progress.

EYFS

To embed the new EYFS curriculum at Pinner Wood



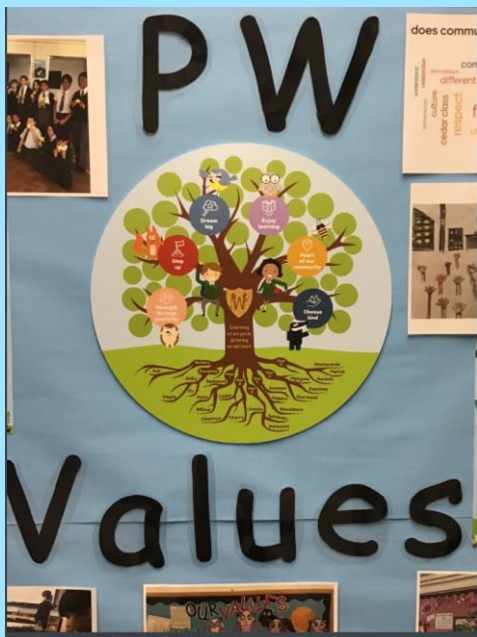
Pinner Wood School

School Improvement Plan-The Quality of Education

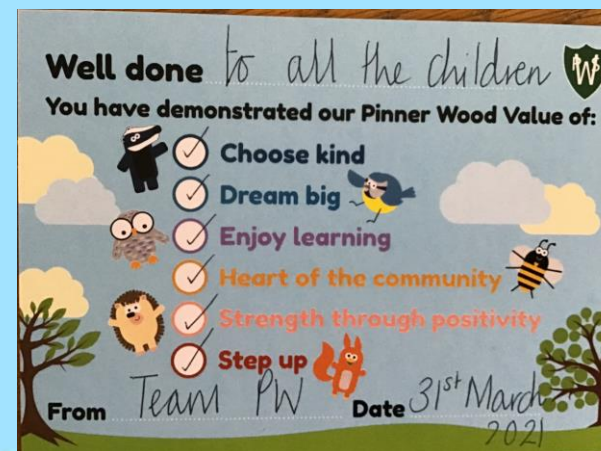
The Quality of Education		
<p>Foundation Curriculum — Arts Focus</p> <p>To look deeply at Art, Music and DT to ensure the teaching is high quality and children are having chance to gain new knowledge in these areas.</p> <p>(MUSIC<-ART-T PLAN)</p>	<p>IT</p> <p>Embed IT teaching into every classroom so that it becomes an integral part of our curriculum.</p> <p>Make use of the new j-pads in each class (1 between 2 year 1 up)</p>	<p>Maths</p> <p>To embed CPA (concrete, pictorial, abstract) methods in maths so that learners understand the concepts.</p> <p>(Maths Plan)</p>
<p>Writing</p> <p>To raise standards in writing by ensuring every learner has a secure grasp of grammar, punctuation and can use this</p> <p>To link class readers to writing to engage writers.</p>	<p>Oracy – Stage 2</p> <p>Embed Oracy across the school.</p> <p>Ensure it is being used in every class as part of the curriculum to develop every child's Oracy skills.</p> <p>(ORACY PLAN)</p>	<p>Reading</p> <p>To continue to ensure that every pupil at PW develops a love for reading and has success in this area.</p> <p>(ENGLISH PLAN)</p>



Behaviour and Attitudes



Behaviour and Attitudes
<p>PW Value</p> <p>Continue to embed to PW values to ensure that they are part of our reward system,</p> <p>To ensure they run through school policies and procedures.</p>
<p>SEN</p> <p>A focus on independence in learning, supported by resources and quality first teaching and planning.</p> <p>Targeted, timely evidenced-based interventions to support this</p>



Personal Development



Personal Development	
<p>Well being and Emotional Health</p> <p>A programme of well being and emotional health to give pupils the emotional literacy to discuss and express how they are feeling.</p> <p>To achieve Healthy Schools Gold Mark</p>	<p>Project Based Learning</p> <p>Continue to develop project based learning at Pinner Wood so that Projects reflect the knowledge learnt in the topic.</p> <p>(History/ Geography Plan)</p>
<p>Diversity</p> <p>To reflect on our current practice, teaching and resources to ensure that they are reflective of our diverse community.</p>	<p>Sustainably</p> <p>To embed Global Goals in our curriculum so that children think about themselves as future global citizens and the impact of their actions.</p> <p>(Geography Plan)</p>



Leadership and Management



Leadership and Management	
<p>New Teachers</p> <p>Induct new teachers and ensure they are supported and know the PW ways of working. To run the ECT programme.</p>	<p>Site Priorities</p> <p>To develop our site to ensure best possible learning for the pupils e.g. Media suite, development of year 5/6 playground.</p>
<p>'Building back'</p> <p>To make use of catch up funding to ensure all children across the school and making good progress.</p>	<p>EYFS</p> <p>To embed the new EYFS curriculum at Pinner Wood</p>

Commitment to Well Being— pupils and staff

IT'S COMPETITION TIME!

Design the Year 5 and 6 playground

What would your ideal playground look like?
Would it have a climbing frame, colourful flooring, a chillout zone, slides, a football pitch?

We want you to design it.

Draw your playground on A4 paper or use the template. There will be more than one winner. We will choose our favourite features from many designs and incorporate them into the overall design of the playground.

Closing date
1st November

Friends of Pinner Wood



Outcomes:

No child misses out' gaps identified (in all aspects) and strategies to support

- All pupils making good progress across the school from starting points.

Children and staff are supported and learning and teaching is outstanding across the school.



Thanks for listening -
Any Questions?

