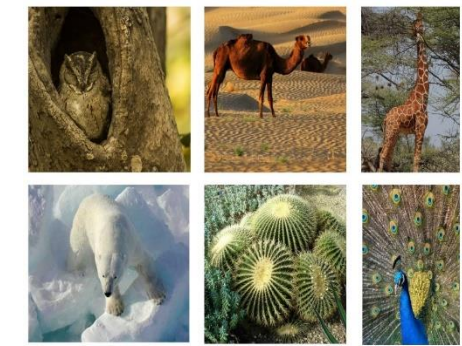
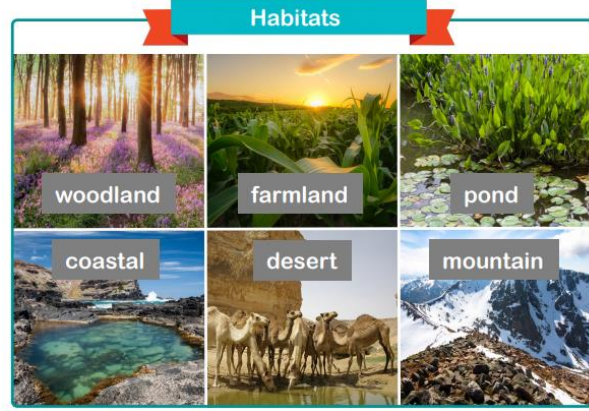


Habitats around the world - How and why are habitats different?



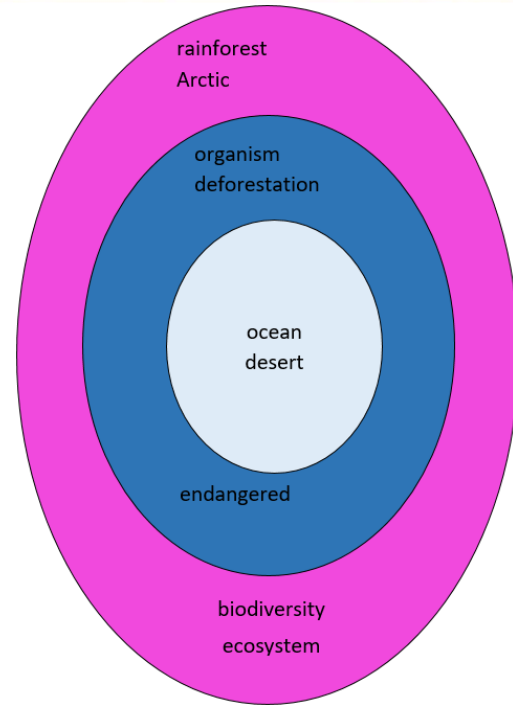
STICKY KNOWLEDGE

Different animals are suited to different habitats and these habitats provide animals with what they need to survive.	Environments are constantly changing and humans can have a big impact on their habitats.	Rainforest is being destroyed by human behaviour including logging, deforestation and farming.
The ocean has many depths to it and different animals live at each level.	The Polar Regions are cold all year round, but many places in the Arctic are warm in summer.	Animals adapt to live in their environments.



KEY VOCABULARY

organism	an individual animal, plant, or single-celled life form.
biodiversity	is the variety of life on Earth
rainforest	an area of tall, mostly evergreen trees and a high amount of rainfall.
endangered	seriously at risk of extinction.
ecosystem	a geographic area where plants, animals, and other organisms, as well as weather and landscape, work together to form a bubble of life.



Key Scientist:



George Washington Carver

George Washington Carver was a prominent African-American scientist and inventor. He is well known for his work with peanuts that gave him a nickname 'the Peanut Man'. He did a lot of research into new and alternate uses for peanuts. He even delivered a speech before the Peanut Growers Association in 1920 promoting the wide potential of peanuts.