



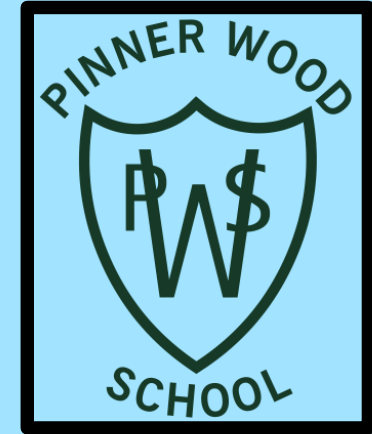
*'Learning as we Grow, Growing as we Learn.'*

**Welcome to Pinner Wood**



# Why choose us?

## Our Ethos



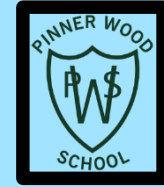
### Our Ethos:

- Be safe and happy
- Have respect for and show kindness to one another
  - Learn and achieve to the very best of our ability

We pride ourselves in being a 'family friendly' open school, where all children progress and achieve well.



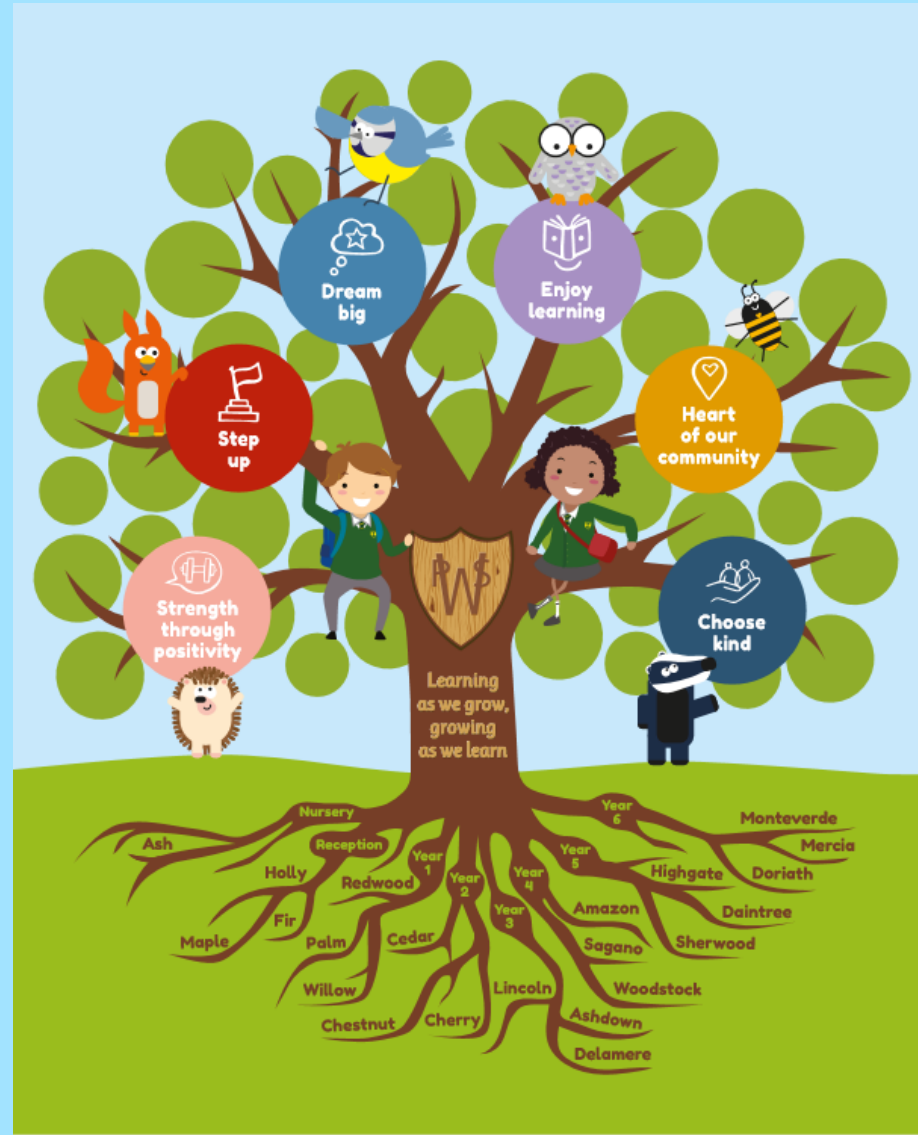
# Key Information



1. We are a **three form entry school** – 90 pupils per year group (3 x classes of 30 pupils).
2. Our on-site **Nursery caters for 39 pupils** *13 x morning sessions, 13x afternoon sessions, 13 x full day (30 hour) sessions* – all children have lunch with us.
3. We are an **oversubscribed school**.
4. All **teachers plan together** so that children get the same deal no matter which class they are in.
5. We are **well-resourced** in terms of adults and resources to provide the best education for the children.
6. We serve a **diverse community** – everyone is welcome, celebrated and important to us.
7. **Hot lunches are served on site** – this is currently free to all pupils.
8. We pride ourselves in **outstanding results throughout the school**.
9. We have a '**heads, hands and hearts**' approach to the curriculum –educating the whole child. Academic knowledge, practical skills and mental well-being.
10. We are currently rated **OUTSTANDING** – this rating is now from 2011 but yearly reviews show we continue to do well.



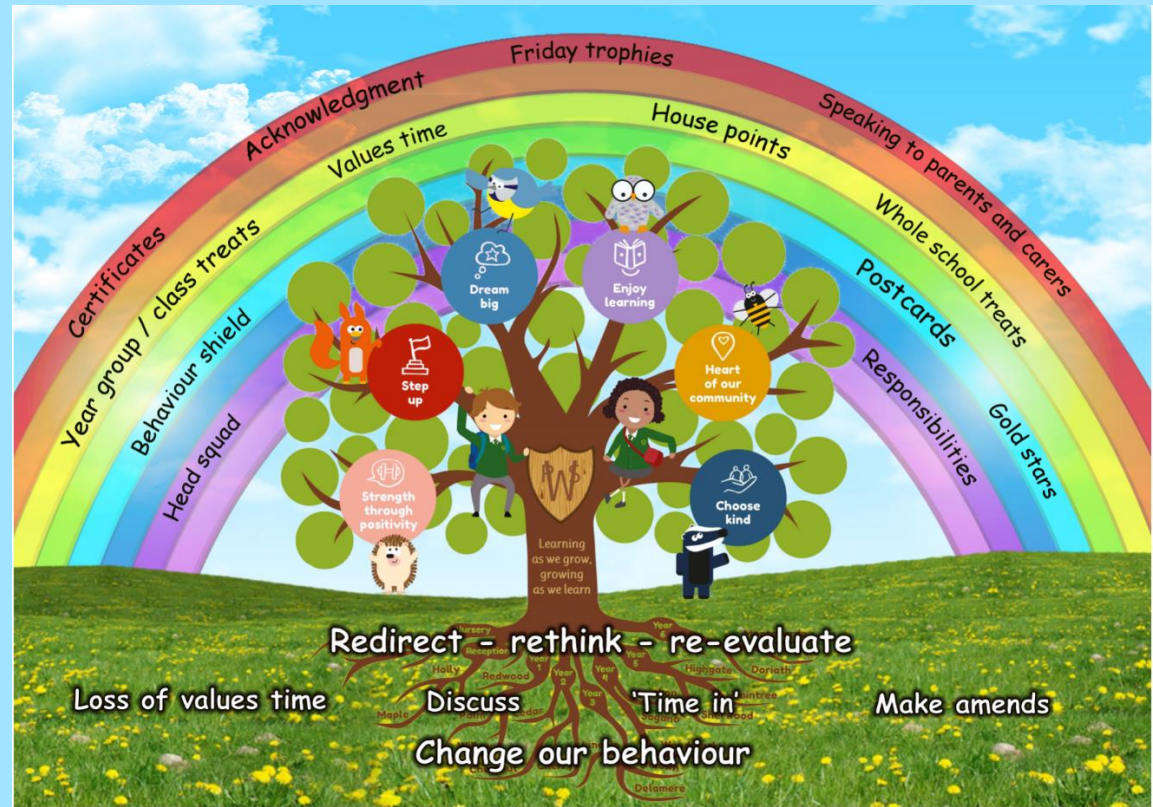
# Our Pinner Wood Values






# Choose Kind

Whole School Rewards



**1 CHOOSE KIND**  **SAMMY SQUIRREL SAYS. 'STEP UP TO SUCCESS'**

**2 KEEP EVERYONE SAFE**  
 • Treat everyone with kindness and respect • Include everyone  
 • Use kind words, gestures and actions • Be polite and friendly

**3 DREAM BIG AND DO YOUR BEST**  
 • Walk inside school- don't run • Play safe games  
 • Tell someone you trust if there's a problem • Be safe online

**4 TELL THE TRUTH**  
 • Allow others to do their best too • Use your time well  
 • Use your voice to share ideas and opinions

**5 LOOK AFTER OUR SCHOOL**  
 • Take responsibility for your actions  
 • Be honest

Label your property • Take care of things  
 • Be tidy and put things away

The 'PW Way'



Pinner Wood School



An outstanding team



Exciting projects



Making the most of our PW environment



Project Based Learning - stunning starts/show stopping endings

# Enjoying Learning



Trips out/ visitors in





Leading Assemblies



Values Ambassadors



# Step Up

Befrienders/  
Playleaders



'Head Squad and Prefects'



School Council



Sports Teams



Eco Warriors





Quality learning



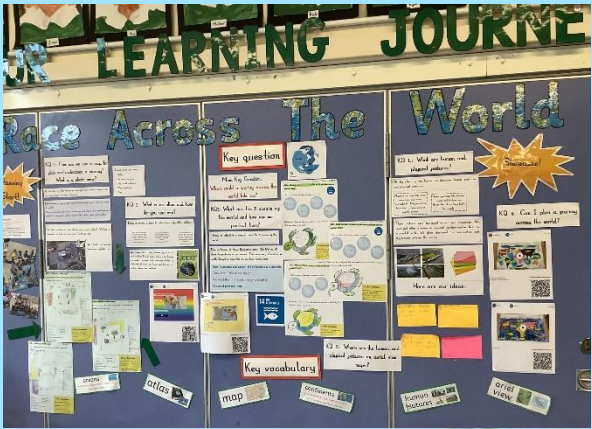
The Arts/  
Music

# Dream Big

Opportunities

High expectations

Achieving goals







Working in partnership



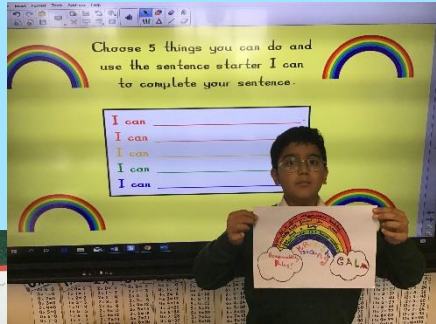
Team Pinner Wood!



Lisa Bennett

# Strength Through Positivity

Pastoral Leader



Mental health sessions



Children First



Cultural Day

Mental Health Days



Fundraising

# Heart of our Community



Family Events



Community Events



Global Goals



Community Visitors



# Safeguarding

Pinner Wood School is committed to safeguarding and promoting the welfare of children and expects all staff and volunteers to share this commitment.

All staff receive annual Child Protection and Safeguarding refresher training and are aware of the procedures for passing on concerns within school.



# Attendance

Pinner Wood School is an outstanding school. Regular attendance and punctuality is paramount to our children reaching their full potential and making the most of the educational opportunities which the school offers them. Missing school means missing out.

That is why at Pinner Wood we pay meticulous attention to our children's attendance and expect all children to attend on time and ready to learn, every day the school is open, unless the reason for absence is unavoidable.



Do you have any questions?

