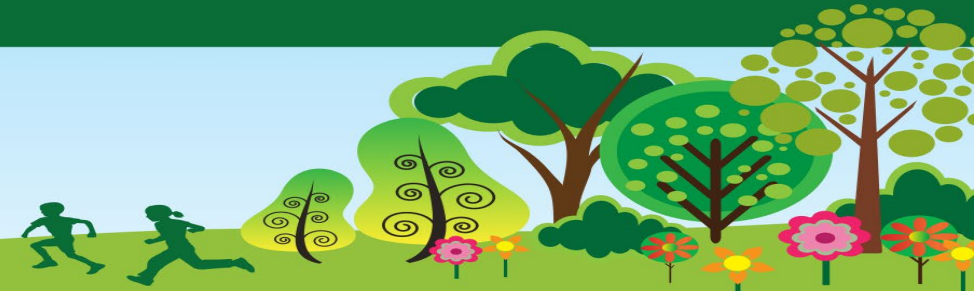


The Great British Seaside



STICKY KNOWLEDGE

The seaside is a place by the sea, with sand and is used as a holiday resort.	In Victorian times, people went to the seaside in England as there were no planes	Sea-bathing is when Victorians wore their clothes in the sea but now we wear swimwear.
Bathing machines were used for women to change into their beach clothes	The beaches used to be a lot cleaner. Less plastic in the sea and on the beach.	Beaches used to be separated into men and women

KEY VOCABULARY

The British Seaside	The seaside is located on the coast. The common features include a beach, a pier, ice-cream and fish and chips.
Beach	A beach is a strip of land separating the land and sea. Beaches are usually made from sand or stones.
Pier	A structure built out into the water for people to walk on
Sea-bathing	Swimming in the sea
Bathing machine	A bathing machine was a tiny hut that would enter the water on wheels. It was pulled by either a horse or a human.



Significant figure: Queen Victoria

Queen Victoria loved to visit the Seaside. She even had her own private beach at her residence, called Osborne House, in the Isle of Wight. Queen Victoria had her own bathing machine where she would spend sunny days with her children.

