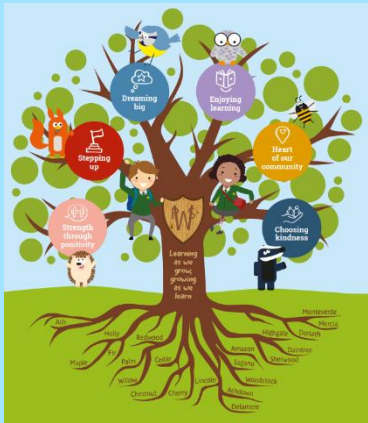




The Early Years
Foundation Stage

The Early Years Foundation Stage

Nursery Induction Meeting



Pinner Wood School

Welcome to Pinner Wood Early Years Foundation Stage (EYFS)

- At Pinner Wood Nursery, we are part of the Early Years Foundation Stage (EYFS) which sets standards for the learning, development and care of children from birth to the age of 5.
- The final year of the Foundation Stage is when children are in a Reception class of a primary school.
- At our Nursery, we offer a caring and nurturing environment, with a play based approach to both teaching and learning



Our Team

- In Nursery, we are very fortunate to have 4 members of staff working with the children throughout the week.
- The teachers will be; Mrs Heritage and Mrs McKeon, who will be leading the class, supported by Mrs Marsh and Mrs Ahmed



Our Environment

- Our Nursery is well resourced and benefits from a large fenced outside area as well as a spacious classroom with toilets and a separate intervention room attached to the classroom. Our children are given the freedom and take their learning inside and outside as we operate a free flow system between the indoor and outdoor environments
- In addition, we will have access to one of The School's large halls for PE and performances. The eco area, including Forest School, is ever growing and we are also have a multi-media suite!



The Areas of Learning and Development

These are the 3 *prime* areas:

- communication and language
- physical development
- personal, social and emotional development

The 4 *specific* areas are:

- literacy
- mathematics
- understanding the world
- expressive arts and design



Characteristics of Learning

- Playing and exploring -

Children investigate and experience things and 'have a go'.

- Active learning -

Children concentrate and keep on trying if they encounter difficulties and enjoy achievements.

- Creating and thinking critically -

Children have and develop their own ideas, make links between ideas and develop strategies for doing things.



Pinner Wood Values



Pinner Wood Values

'Growing as we learn, learning as we grow'

Our values

Sammy Squirrel

Step up

"Be you! Be proud of who you are! Take responsibility for your actions, stand by your ideas and support our school. Go the extra mile to make Pinner Wood a better place – because of you."

Our values

"Be thoughtful, considerate, forgiving and generous. Treat people how you would like to be treated. Be understanding, empathetic and go out of your way to help others. Be kind to yourself; make sensible and healthy choices to enable you to live life to the full."

Barney Badger

Choose kind

Our values

"Have fun whilst enjoying learning – wonder at the discovery of new things and delight in having new experiences. As we grow we learn – and as we learn, we grow."

Ozzie Owl

Enjoy learning

Our values

Bonnie Bird

Dream big

"Be ambitious and interested in your future. Be curious, dedicated and unstoppable. Aim to create an exciting and beautiful world for us to live in together. Reach for the stars!"



Our values

Strength through positivity

Hari Hedgehog

"Be resilient in mind and body. Keep going when things get tough. Be optimistic and know that you can overcome challenges. Be solution focused and forward thinking. You can do it!"

Our values

Heart of our community

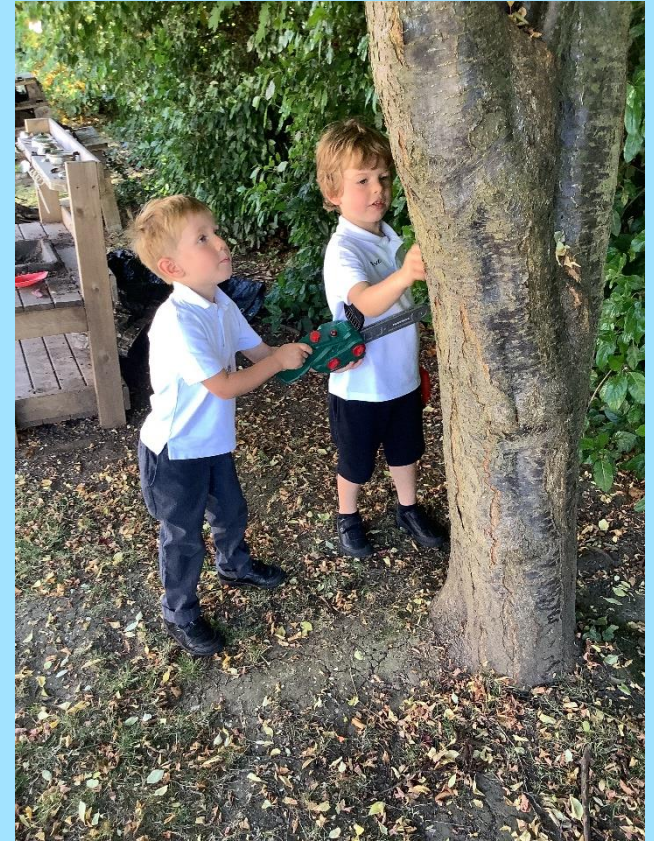
Betty Bee

"Celebrate being part of our diverse community and contribute what you can to make Pinner Wood a special place to be. Know you belong to our community, all of us together as one."



Communication and Language

Communication and language development is a big focus in Nursery. We offer a language rich environment where we build vocabulary based on the children's experiences, giving them the opportunity to converse about things they are passionate about.



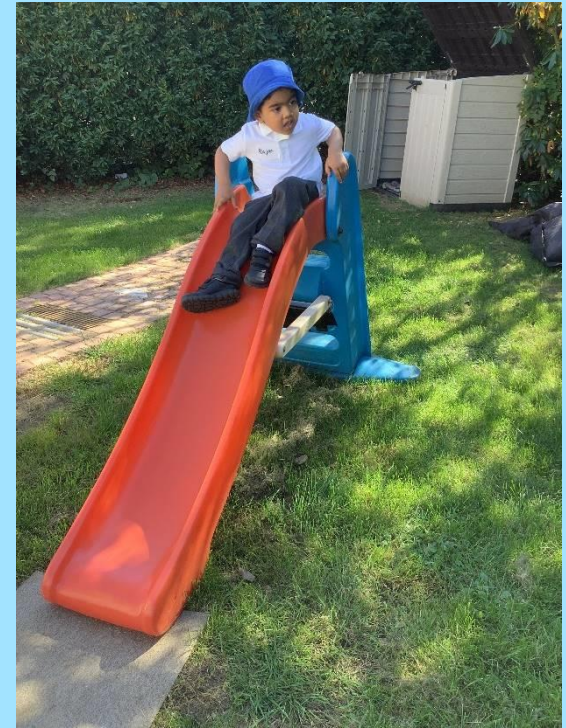
Pinner Wood School



Physical Development

Physical development involves providing opportunities for young children to be active; and to develop their co-ordination, control, and movement.

Both during PE lessons and in the outside space, children will match their developing physical skills to tasks. They will also begin to discuss healthy choices.



Personal, Social and Emotional Development

Personal, social and emotional development involves children developing friendships with other children. They will be encouraged to develop a sense of responsibility and membership of our school community and become more confident in new social situations, enabling them to extend and elaborate on each others play ideas.

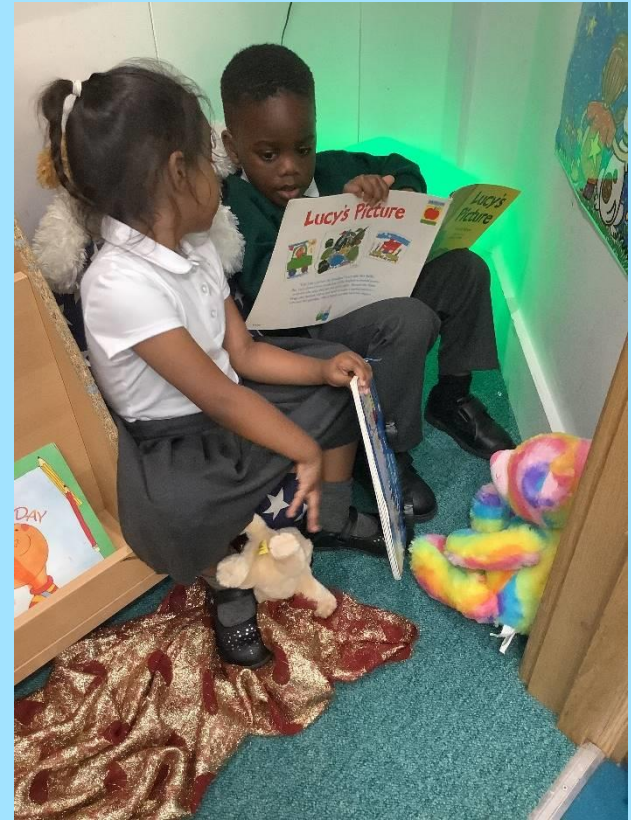


Pinner Wood School



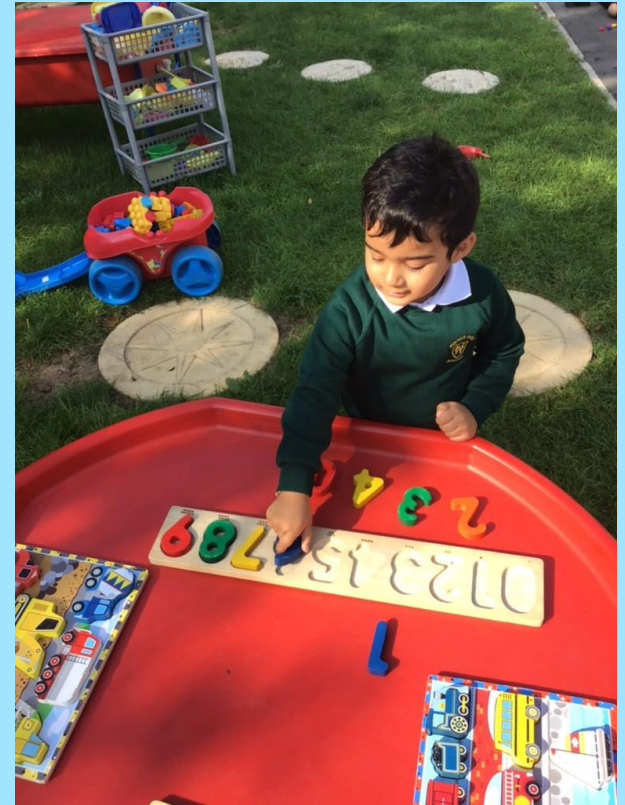
Literacy

Literacy development involves encouraging the understanding that print holds meaning and texts can have different purposes. Children will engage in extended conversations about stories, learning new vocabulary and may be encouraged to recognise some sounds in words.



Mathematics

Mathematics involves providing children with opportunities to develop and improve their number skills by counting, reciting numbers and linking numerals to amounts. The children will learn lots of new mathematical vocabulary and will explore shape, position, length, weight and capacity in a range of contexts.



Pinner Wood School



Understanding the World

Understanding the world involves guiding children to explore the world around them through discovery and discussion of natural materials, animals and plants. Children will be encouraged to develop positive attitudes about the differences between people and learn to celebrate differences!



Pinner Wood School



Expressive Arts and Design

Expressive arts and design involves enabling children to take part in pretend play making imaginative "small worlds". They will explore different materials, colours and textures and will have the chance to express their thoughts and feelings about different music they hear, as well as remembering and singing entire songs themselves.



A Typical Day in Nursery...

The day the consists of:

- A soft start
- Child-initiated learning
- Adult-led and adult-guided play activities from all areas of the curriculum
- Snack time
- Daily carpet sessions discussing our topic or theme for the week or singing songs/ hearing a story



Observations

- Our observations of your child help us to assess the progress which they are making.
- Observations help us to decide where your child is in his/her learning and development and to plan next steps of learning.
- Wow moments during child-initiated play



Learning Journals

- This is a record of your child's learning and experiences in Foundation Stage. It will be stored online through a secure programme called 'Tapestry'. You will be able to access this online or on your smart phone or tablet.
- It consists of photos of children's work and play. These are annotated and linked to the curriculum
- The child's experiences and development at home and outside of school are of equal value.
- We encourage you to contribute to their journal by sharing learning that happens at home.
- We will be running a workshop very soon to introduce you to 'Tapestry'



Settling In

- We will find out what your child knows and can do.
- We will use this information to help us develop an individual learning programme for your child.
- We would value any contributions you would like to make in helping us get to know your child.
- Please come and speak to us if your child has any special requirements, support needs, speech/language difficulties, allergies or medical/health needs etc.
- If your child needs more support to settle into school, we may agree a different starting timetable with you.



Communication between home and school

- Our half day sessions are from 8:45am-11:45am and 12pm-3pm
- A full day is from 8:45am-3pm
- Open door policy- welcome Parents to talk to us
Weekly newsletter by Parentmail
- Absence notification by phone and letter.
- Other issues eg. health, family arrangements.



Lunches

Packed Lunch

- As we are part of the Healthy Schools Scheme, we encourage eating as healthily as possible: water/ juice to drink and limit crisps and biscuits!
- We are nut-free.
- Please spend some time over the summer helping your child to become more independent in feeding themselves



Snack time

- Everyday the children will be offered fruit from our Fruit scheme and a cup of milk or a drink from their water bottle.
- We will encourage them to try all the different fruit.
- Please complete the form requesting milk.
- Allergies- make us aware of any.



Importance of drinking water

- Please provide a labelled bottle of water for your child every day.
- This will be in addition to the water brought in the lunchbox.
- Your child will be encouraged to drink throughout the day.



Uniform

- Please ensure that names are in everything
- Send coats everyday as the children will spend lots of time outside even during the winter
- Apply sun cream before school and send in a labelled hat in hot weather
- Sensible trainers/shoes and no jewellery
- Long hair to be tied up
- Children to come to school in PE kits on PE day



Other matters...

- Please bring book bag everyday
- Children can borrow books from the school library
- Please ensure that your child looks after school books including library books.
- Children will have regular home learning activities to be completed with your support. These are outlined in our weekly newsletter.



Almost done...

- If you have any worries or concerns please come in and see us and we will do our best to help.
- We look forward to getting to know you and your child. We hope that your child will soon be happily settled with us and that they will enjoy their time in Nursery.

