

# Living things and their habitats



## STICKY KNOWLEDGE

Plants are living organisms and contain both male and female cells. Some need to be pollinated in order to be fertilised - this is called sexual reproduction. Others grow by extension this is called asexual reproduction	Mammals reproduce and give birth to live young. They can be either placental, monotreme or marsupial	Insects and amphibians have different life cycles and complete metamorphosis.
The different parts of a flower are called - stigma, style, ovary, stamen, petal and sepal.	Metamorphosis is the change in body form and habits during the life cycle.	Most birds and reptiles are born when the mother lays eggs and incubates them until they are ready to hatch

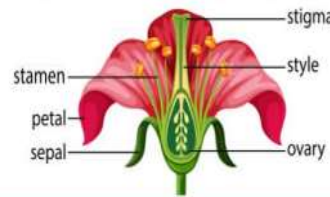
## KEY VOCABULARY

living organism	something that can move, use energy and reproduce
metamorphosis	when insects and amphibians transform from larval stage to their adult form
asexual	where only one parent is needed to create offspring
reproduction	to make offspring either sexually or asexually
placental mammal	has live young which develop before birth inside a female mammal
monotreme mammal	a mammal who lays eggs to reproduce
fertilisation	when a sperm and egg cell join together

### Reproduction in plants

Plants contain both male and female cells. Some need to be pollinated in order to be fertilised. Others use asexual reproduction to reproduce.

#### Common Flower Parts

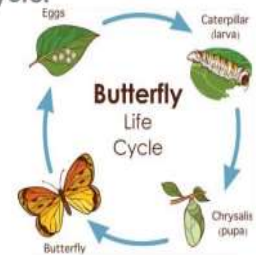


### Birds and Reptiles

Most birds and reptiles are born when the mother lays eggs and incubates them until they are ready to hatch. Once the egg is hatched, the baby is looked after by the mother before leaving the nest.

### Metamorphosis

Amphibians are a bit different. Many are born live or underwater. They complete a metamorphosis as adults and can live and breathe on land. Metamorphosis is the change in body form and habits during the life cycle.



### Important People

David Attenborough and Jane Goodall study living things. They present the life of animals on earth and have made important documentaries so we can learn about the world around us.



### Mammals

Mammals reproduce and give birth to live young. They can be either placental, monotreme or marsupial.

