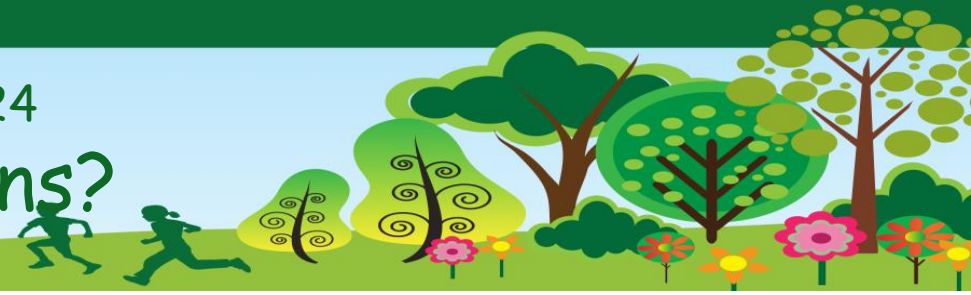


Knowledge Organiser- Science (Physics) - Year 1 - Spring Term 2024

Seasons - What are the 4 different seasons?



STICKY KNOWLEDGE

There are 4 seasons.	In Autumn, many leaves fall off trees and some animals hibernate.	In Winter it is cold and some trees have no leaves
In Spring it is mild. Trees begin to grow new leaves and some flowers like daffodils begin to grow. Animals are born.	In Summer, the weather is warm. We wear sunglasses and sun hats. There are lots of flowers.	Rain is measured using a rain gauge.

KEY VOCABULARY

Season	One of four parts of the year; spring, summer, autumn and winter
Autumn	A season between September and November
Winter	A season between December and February
Spring	A season between March and May
Summer	A season between June and August
Rain gauge	Measures the amount of rainfall



The trees changes in each season.



We wear different clothes in each season.



We have seasons because of the way planet Earth moves around the sun.